

# Wafer Check Valves

## Wafer Check Valves Carbon Steel

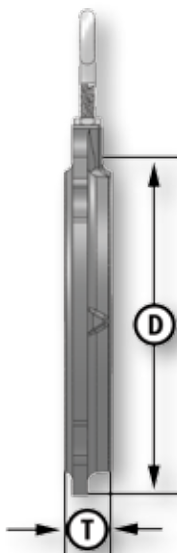
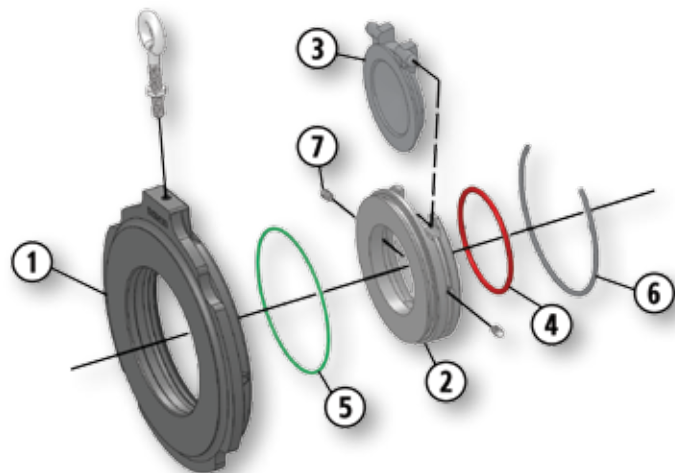


- Thin Pattern Swing Check Valve
- ANSI 300 (740 PSI WP)
- 2" Through 6"
- Forged Steel Body Construction

- Replaceable Seat Disc Cartridge
- Seal Located in Seat, Thus Protected From Flow
- NACE Standard
- 316 Stainless Steel Disc Standard
- Generally Larger Port Sizes Than Other Brands

### Material Description

| ITEM | PART NAME | CARBON STEEL SEAT           | STAINLESS STEEL SEAT                      |
|------|-----------|-----------------------------|---|
| 1    | Body      | ASTM A105                   | ASTM A105                                 |
| 2    | Seat      | Replaceable Carbon Steel    | Replaceable 316 Or 17-4PH Stainless Steel |
| 3    | Disc      | Replaceable Stainless Steel | Replaceable 316 Stainless Steel           |
| 4    | O-Ring    | Seat Seal: Fluorocarbon     | Seat Seal: Fluorocarbon                   |
| 5    | O-Ring    | Assembly Seal: Buna-N       | Assembly Seal: Fluorocarbon               |
| 6    | Retainer  | Stainless Steel             | Stainless Steel                           |
| 7    | Set Screw | Stainless Steel             | Stainless Steel                           |



### Dimensional Data

| SIZE | CATALOG NUMBER    |                      | PORT | D    | T   | STUD LENGTH | LBS. |
|------|-------------------|----------------------|------|------|-----|-------------|------|
|      | CARBON STEEL SEAT | STAINLESS STEEL SEAT |      |      |     |             |      |
| 2    | 2T-300            | 2T-300S              | 1.25 | 4.37 | .75 | 4.50        | 2.5  |
| 3    | 3T-300            | 3T-300S              | 2    | 5.87 | .75 | 5.25        | 4.4  |
| 4    | 4T-300            | 4T-300S              | 2.81 | 7.12 | .75 | 5.50        | 6.95 |
| 6    | 6T-300            | 6T-300S              | 4.50 | 9.87 | .87 | 5.75        | 13.6 |